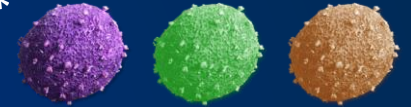




RAW MATERIAL (allogeneic Tumor cell lines) SELECTION CRITERIA

Based on resistances acquisition capacities & represent heterogeneity of the targeted indication

The 3 Cell lines with the best *in vitro* **resistance capacities** have been selected for the targeted indication.*
For each of them a RCB has been **manufactured and controlled**.



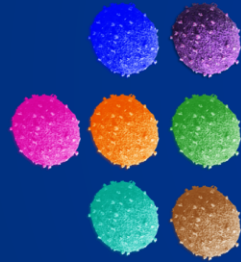
LITERATURE & DATA BASE SCREENING

Manufacturing of x RCB (Research Cell Banks)

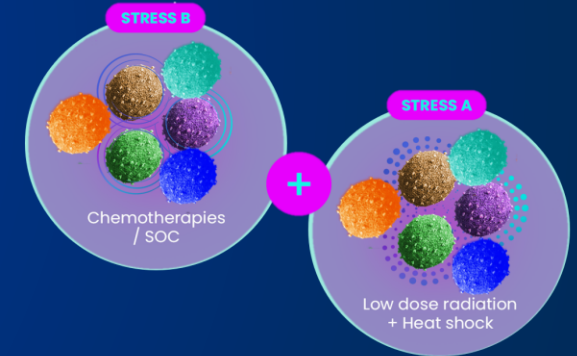
1st RESISTANCES ACQUISITION Metabolic

2nd RESISTANCES ACQUISITION Chemical & Physical

« x » cell lines from
cell database and
literature out of a hundred



Mimicking antiVEGF
(nutrients depletion)



- Oncogenic drivers represented
- Cold and hot tumor cell lines
- Resistance predisposition

- Adapted Culture conditions for growth.

- Nutrient depletion to keep resistant cells only
- Freezing process

- Induce Hsp70 expression (A)
- IC50 of standard of care of the targeted indication (B) *

LIMITLESS POTENTIAL *

STC IP strategy allows Brenus to consider treating other indications changing the **raw material** (cell lines), and **stimulations** (Standard of care), the final **drug product** will always **be protected**.

Mimicking SOC
resistances